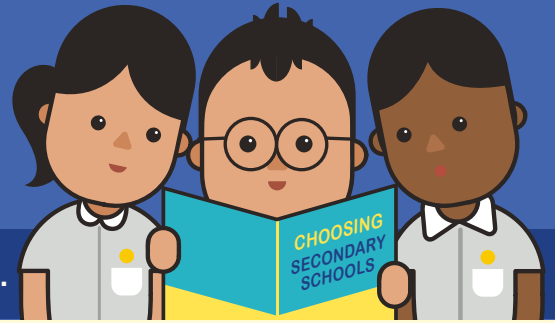


# A SECONDARY SCHOOL THAT'S SUITABLE FOR YOUR CHILD



Help them match the school to their strengths and interests.

## ASK:

**What are their strengths, interests, and abilities?**

- What kind of courses, programmes and opportunities will develop these?
- Will the pace of learning be suitable for them?



## CONSIDER:

- **School Culture**
- **Courses**
- **Programmes, Subjects and CCAs Offered**
- **Location and Transport**
- **If your child has Special Educational Needs**

Select schools with specialised facilities or resources.



## SUBMIT:

- **6 School Options**  
So that your child is more likely to get into a school of choice.
- **Schools with Different Cut-Off Points**  
Consider at least 2-3 schools where your child's PSLE Score is better than the school's Cut-Off Point.

## REFER TO:



### **MOE's SchoolFinder**

Check out schools based on subjects offered, Co-Curricular Activities, location and contact information.

## YOUR RANKING OF SCHOOL CHOICES MATTERS.

The higher you rank your preferred school in your choice order, the better your child's chance of being posted there if there is a tie-breaker.

Do note that schools' PSLE Score ranges can vary from year to year, since they depend on each cohort's performance and choice patterns.

