

# Holistic Assessment (HA)

To support the learning  
and  
development of the child



*Resilience, Innovation, Integrity, Care, Collaboration and Excellence*

# Aim of Primary Education

- ❖ To lay a strong foundation
- ❖ To nurture the whole child

Values  
Life skills  
Social behaviour





# Develop the WHOLE child

## Every subject is important



*Resilience, Innovation, Integrity, Care, Collaboration and Excellence*

# Assessment is part of learning



# Changes to School-Based Assessment (SBA)

## From 2019

P1 & P2 - Remove all weighted assessments

Use of qualitative descriptors to report learning in all subjects

ZHPS – At the end of the year, P1 students will stay with their classmates and move together to the same P2 classes.



# Assessment at Primary 1



Non-weighted

✓ **Different types of assessments**

e.g.

- **Topical Reviews**
- **Short Writing**
- **Reading**
- **Performance Tasks**

✓ **Shorter assessments**

✓ **More and richer feedback**

- ~~Mid Year Exam~~
- ~~Year End Exam~~

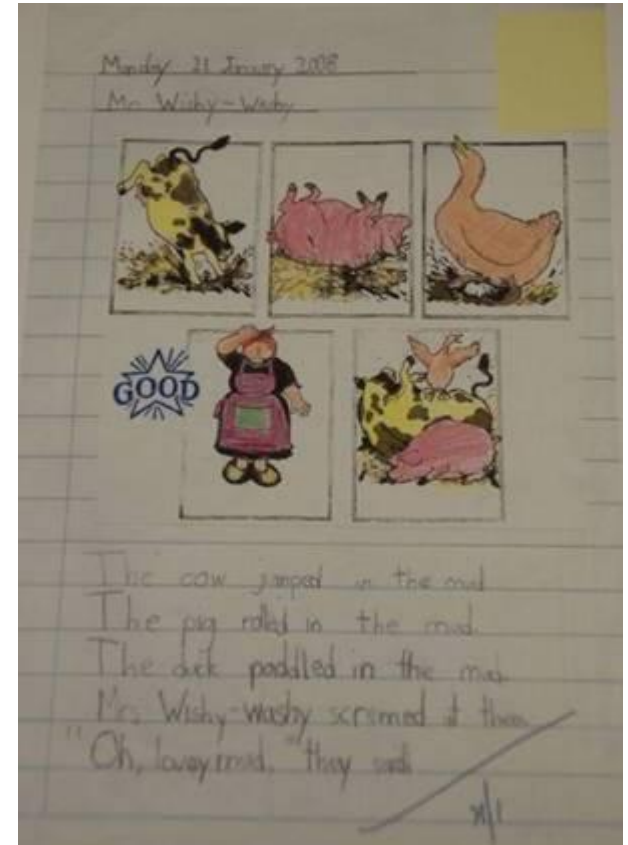




# How will my child be assessed for Languages?



**SHOW & TELL, READING ALOUD**



**Story Writing**



*Resilience, Innovation, Integrity, Care, Collaboration and Excellence*



**Show and Tell**



**Reading Tasks**



**Simple Writing Tasks**



**Teachers ask questions and give feedback to improve pupils' learning**



*Resilience, Innovation, Integrity, Care, Collaboration and Excellence*



# READING ALOUD RUBRICS

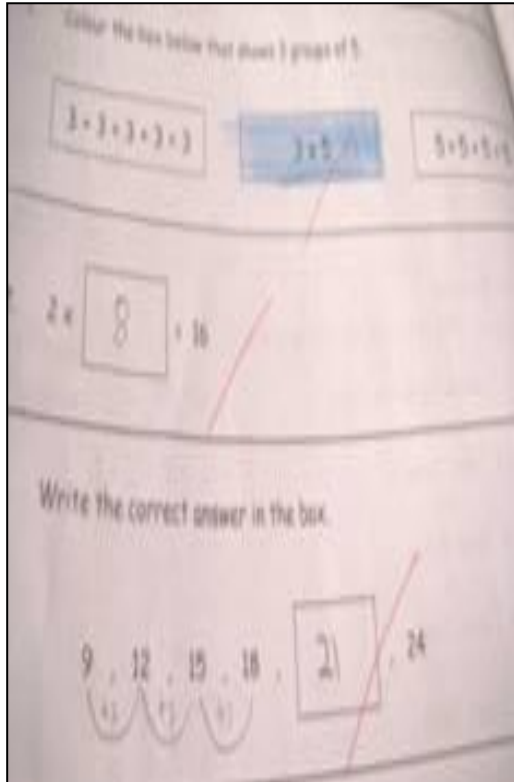
Descriptors	☺	☺☺	☺☺☺	☺☺☺☺
Pronunciation	Pronunciation is unclear, with many errors	Pronunciation is somewhat unclear; with a number of noticeable errors	Generally clear pronunciation, with a number of noticeable errors	Clear and consistently good pronunciation
Fluency	Very slow and jerky reading of words, with many words skipped or unread	Slow and hesitant reading with many words skipped or unread	Reading is somewhat fluent with some words skipped or unread	Consistently fluent reading without hesitation



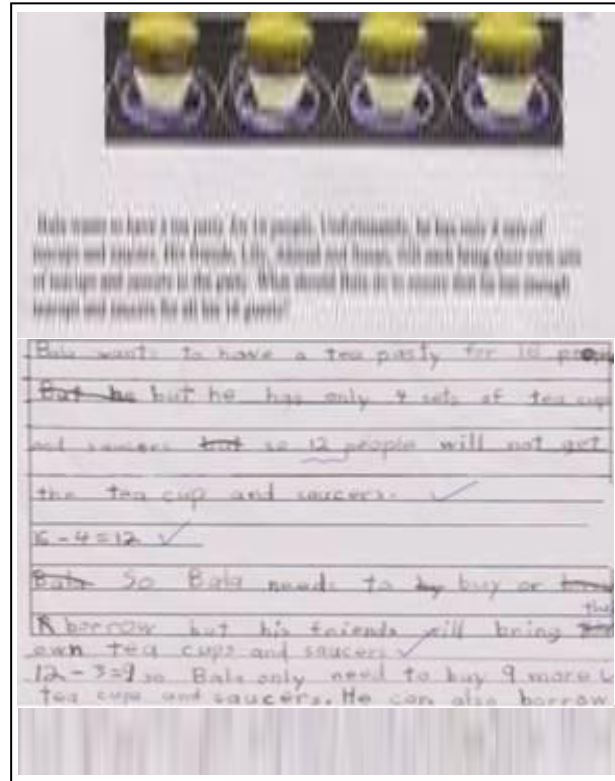
# Self & Peer Assessment

	Please tick(✓)		
	Yes	Sometimes	No
I looked at my friends while presenting.			
I spoke clearly.			
My friends could hear me.			
I spoke in complete sentences.			
	Please tick(✓)		
	Yes	Sometimes	No
My friend looked at us while presenting.			
My friend spoke clearly.			
My friend was well-prepared.			
My friend knows the topic well.			





**Bite-Sized Review**



**Journal Writing**

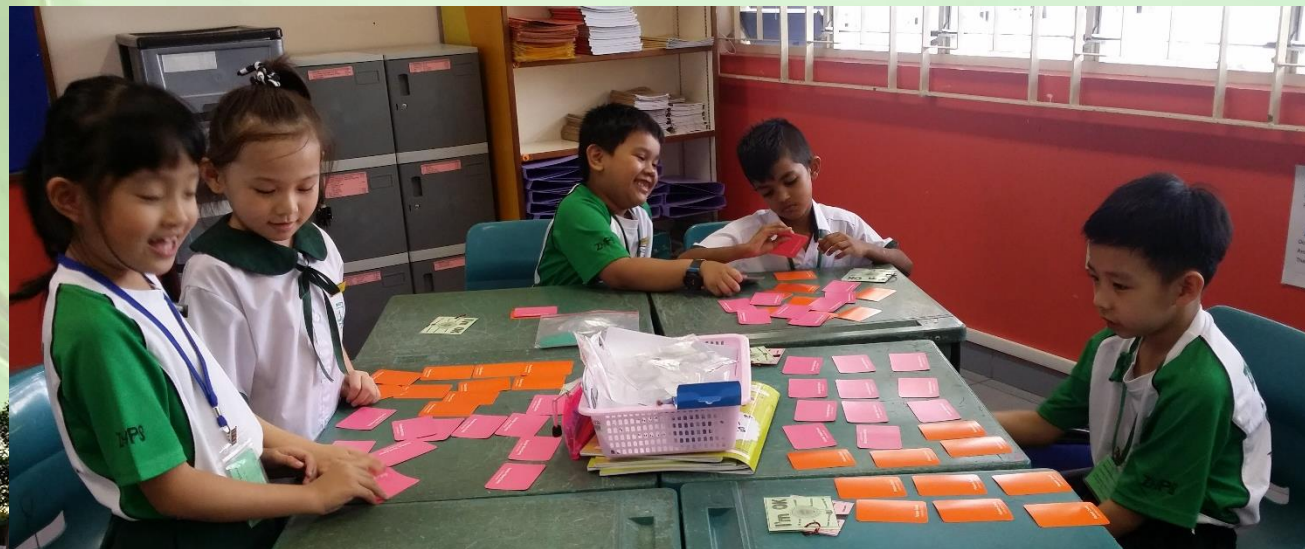


**Performance Tasks**





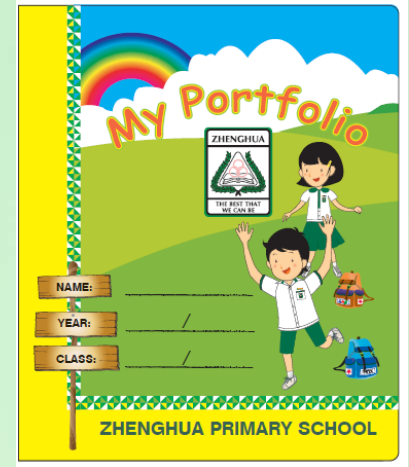
# A range of appropriate assessment tasks and practices are used to assess other subjects



# How will you receive feedback on your child's progress?

## 1) Holistic Assessment Portfolio

- Termly progress reports will be shown with the portfolio
- Portfolio contains a good sample of your child's work and performance tasks in all subjects
  - with rubrics
  - with teacher's qualitative comments





# How will you receive feedback on your child's progress?

## 2) Mid-year and End-of-year report cards

- Qualitative descriptors (Learning Outcomes) to show your child's learning progress
- Overall qualitative comments on your child's learning





# Partnership with Parents

## Term 2: Parent-Child-Teacher Conference



*Resilience, Innovation, Integrity, Care, Collaboration and Excellence*

# Programme for Active Learning



PAL



*Resilience, Innovation, Integrity, Care, Collaboration and Excellence*



# The 2 Broad Areas in PAL

1. Sports & Outdoor Education
2. Performing & Visual Arts



*Resilience, Innovation, Integrity, Care, Collaboration and Excellence*





# Objectives of PAL

- Provide P1 and P2 students with broad exposure and experiences through fun & varied activities
- Facilitate holistic development in the 5 domains (cognitive, moral, social, aesthetics, physical)
- Provide varied avenues to develop *social emotional competencies*



*Resilience, Innovation, Integrity, Care, Collaboration and Excellence*

# Characteristics of PAL –

- Learning in a Creative Way
- Opportunities for Children to Create



*Resilience, Innovation, Integrity, Care, Collaboration and Excellence*



# Characteristics of PAL :

- Experiential in Nature
- Fun & Enjoyable



*Resilience, Innovation, Integrity, Care, Collaboration and Excellence*





Characteristics of PAL –

■ Incorporates Values Education & SEL

*Resilience, Innovation, Integrity, Care, Collaboration and Excellence*

# PAL in ZHPS

- P1 - 3 modules
- Each module spans 7 weeks
- 2 hrs of PAL a week

## P1 Module

1. Outdoor Education
2. Visual Art
3. Sports and Games

The End



*Resilience, Innovation, Integrity, Care, Collaboration and Leadership*