

Zhenghua
Primary School

Open House
2024





CHOOSING A PRIMARY SCHOOL

Some Key
Considerations

Some Key Considerations

What are your child's needs, strengths and interests? Can the school meet his/her needs and bring out the best in him/her?

What is important to you as a parent?

What are your values and educational priorities as a parent?

What kind of school environment do you want for your child?

Some Key Considerations

What kind of childhood experiences and education would you like your child to have?

What qualities would you like to see in your child in 6 years' time?



INTRODUCTION TO ZHENGHUA PRIMARY SCHOOL

ESTABLISHED IN 1989

*Cheng Hwa School –
Established in 1941*

ZHPS Over The
Years – What Is
Distinctive And
Enduring?





ZHPS Over The Years – What Is
Distinctive And Enduring?
Our Caring Culture

ZHPS Over The Years – What Is Distinctive And Enduring?

- Excellent teamwork of caring, committed staff



ZHPS Over The Years – What Is Distinctive And Enduring?

- Our vibrant learning environment with opportunities for students to develop their interests and talents



ZHPS Over The Years – What Is Distinctive And Enduring?

Our Strengths In The Creative Arts

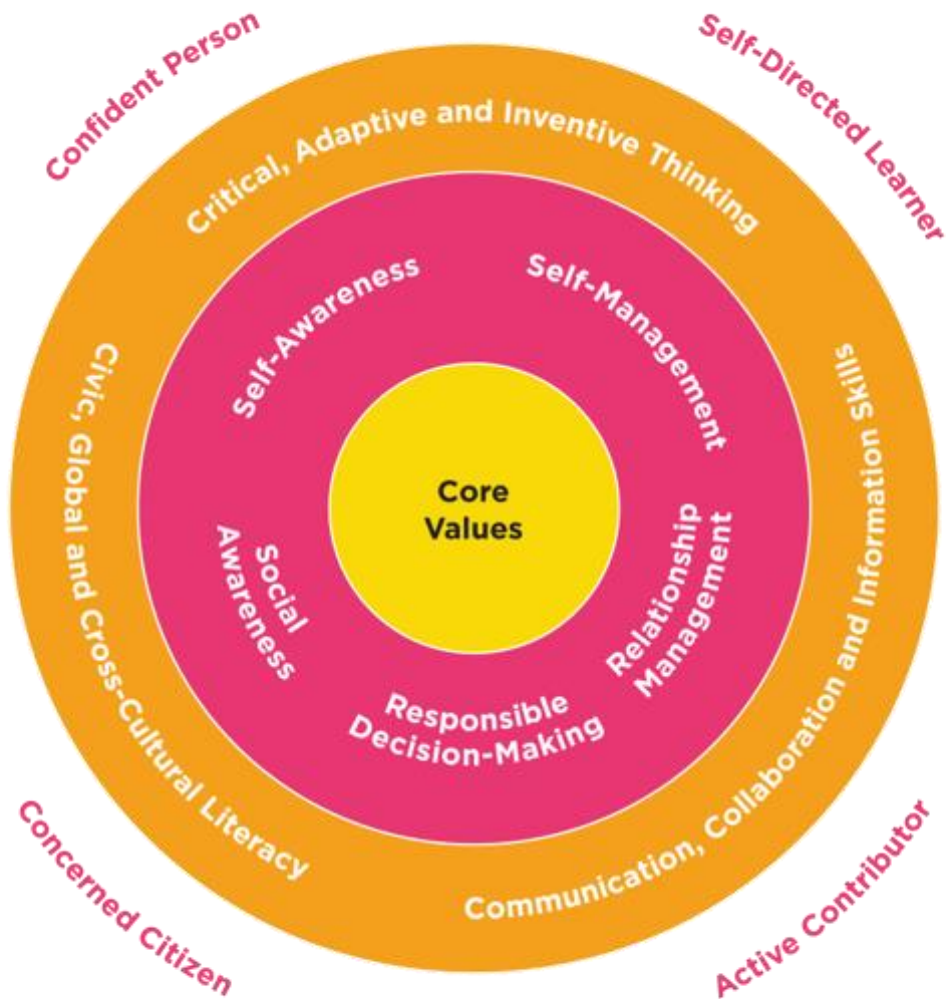


Our Beliefs

- We love, value and accept our students for who they are.
- We believe that every child is special and talented in his/her own way and seek to bring out the best in each of our students.
- We believe that, with effort, our students can learn and are capable of achieving their personal best.



MOE's Framework for 21st Century Competencies and Student Outcomes



Our School Vision, Mission and Values

- **Vision:** Leaders of Character, Critical and Creative Thinkers, Lifelong Learners.
- **Mission:** Nurture the whole child in a caring, innovative, collaborative and vibrant learning environment.
- **Values:** (RI²C²E) Resilience, Innovation, Integrity, Care, Collaboration & Excellence
- **Motto:** The Best that We Can Be

**OUR
CHARACTER
IS OUR
SUPER POWER**

**21st century
competencies
are our**

SUPERPOWER

From the AssemblyTalk on 15 Jan 2024

Emotional
Intelligence

*is a
super power*

**MINDSET
IS YOUR
SUPER
POWER**

KAPOW!

All our students have
superpowers

Our school is
developing our
students'
superpowers for life
and lifelong learning





Welcome to Zhenghua Primary School!

2.2K views 10 mo ago ...more



Zhenghua Primar... 641

Subscribe

Open House
Video:
Introduction To
Zhenghua
Primary School

<https://www.youtube.com/watch?v=D42c-XLsRQ4&t=81s>

facebook

Log In

← Ministry of Education, Singapore's post



Ministry of Education, Singapore

15 Feb 2024 ·

At Zhenghua Primary School, lessons don't always follow an expected script. Students uncover toy dinosaurs hidden in a sandpit while honing their noun phrase skills, budget for a party to sharpen their financial literacy skills, and build 'smart bins' using Lego to deepen their awareness of sustainability. It's all part of their learning experience, where communication, collaboration, and problem-solving take centre stage.

#CCEforLife



Developing 21st Century Competencies



“

21CC is about readying our students for the future,” says Mrs Constance Loke, Principal, Zhenghua Primary School.

“We want our students to feel confident, be curious, ask questions, and take charge of their learning.”

“The world is unpredictable. The only way to prepare our students for the future is to equip them with transferable skills that are important for life and work, while grounding them in values.”

© Ministry of Education, Singapore. All Rights Reserved.

Like

Comment

Send





Dinosaur chases and baking in Maths: It's all about developing 21st Century Competencies

18 JAN 2024

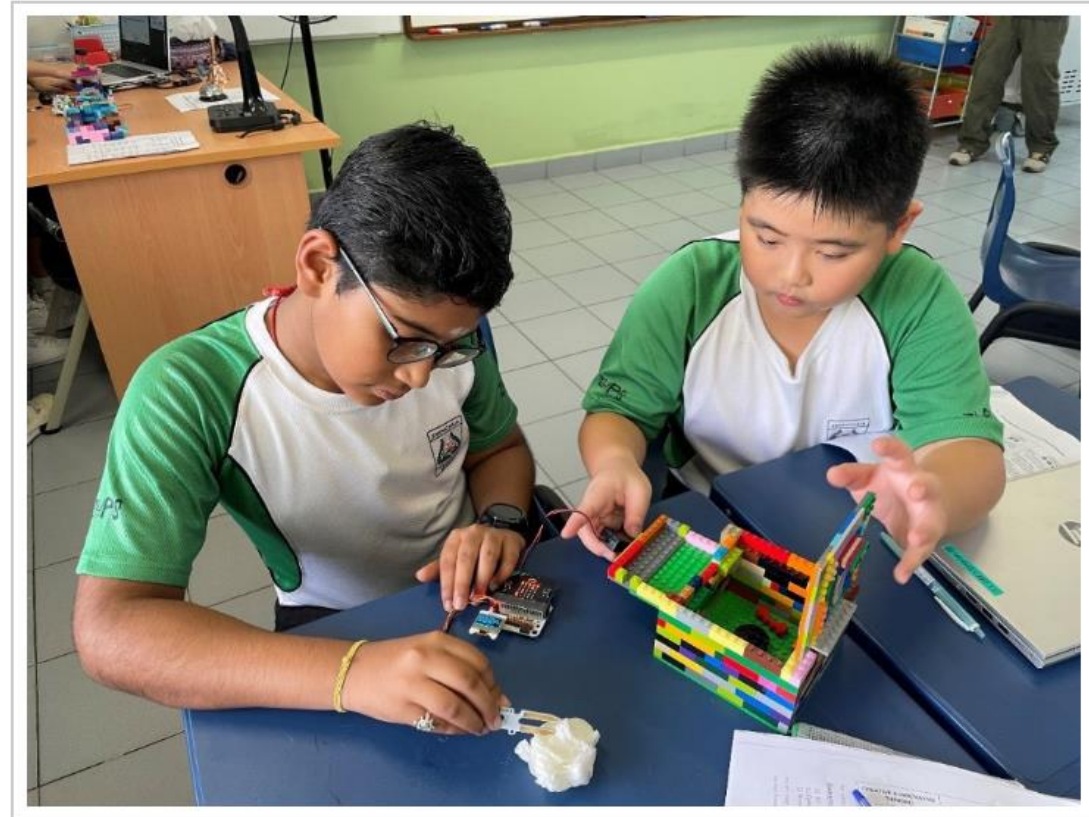
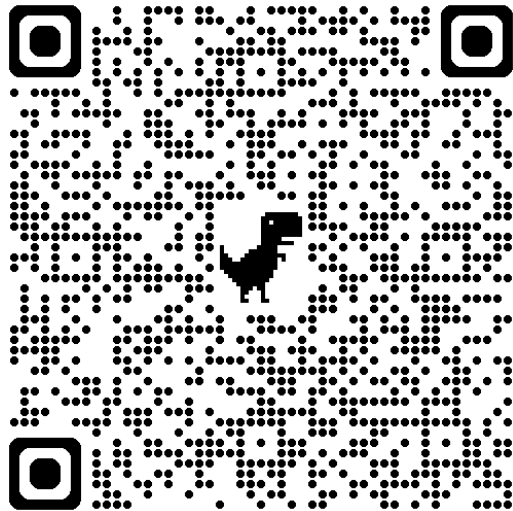


At this English lesson, students take turns experiencing a 360-degree immersive escape from a T-Rex. They figure out the technology together and problem-solve issues.



Dinosaur chases and baking in Maths: It's all about developing 21st Century Competencies

18 JAN 2024



Primary 5 student Boobathy Harish (left) and Ming Hansong tackle the problem of wet items being thrown into recycling bin for their ALP project. From their discussions, they decided to create a "smart bin", using Lego bricks, which could inform the user when inappropriate items are tossed inside.



Our Zhenghua Philosophy

- Students our Focus
- Staff the Key
- Parents & the Community our Partners



OUR PARTNERSHIP PHILOSOPHY

- It takes a village to raise a child.
- A meaningful collaboration with our parents, internal stakeholders and community partners supports our students' holistic development and teachers' professional development.

What our Parents Appreciate about our School and Teachers

Recurring themes of parents' responses in our parents' survey - "Please share with us what you appreciate about your child's education at Zhenghua Primary School":

Parents appreciated

- the holistic education their child received, with opportunities to develop their child's interests and talents, especially in the creative arts, and opportunities for their child to shine;
- supportive, caring teachers who go the extra mile for the students and partner parents;
- the learning support for students;
- the growth of their child – parents mentioned that their child was more independent / responsible / confident / expressive.

Our Value Proposition and Commitment:

: Nurture the whole child and prepare our students for ***life and lifelong learning*** through a learner-centred, values-based holistic education that is forward-looking

Our Priorities:
Preparing Our Students For Life And Lifelong Learning:
Students as **Leaders** and **Learners**

Leaders of Character

- Leaders of character and concerned citizens who contribute positively to the school, community and nation

→ **Student Agency**

Self-directed,
Lifelong Learners

- Empowered, self-directed lifelong learners who take ownership of their learning and are able and willing to learn for life

→ **Student Agency**

Student & Teacher Voice & Agency

*21CC for life & lifelong learning
Character
Leadership
Citizenship

Communication,
Collaboration &
Information Skills

Critical, Adaptive
& Inventive
Thinking

Civic, Cross-
Cultural and
Global Literacy

Zhenghua
Signature
Pedagogies, Design
Principles for T&L

Technology as a
Capability
Multiplier

Zhenghua
leader &
learner

Learning
Partnerships

Learning Spaces

Joy and
Meaning
in
Learning

Culture of Care, Learning, Innovation & Collaboration



Q&A

